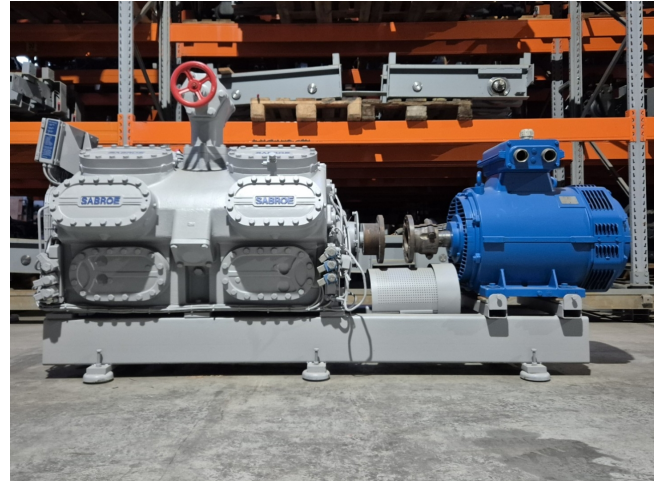


Sabroe SMC 116 S LP (Overhauled)

Specifications

Marka	Sabroe
Typ	SMC 116 S LP (Overhauled)
Czynnik chłodzący	Freon
kW at -30°C/+40°C	155,7
kW at -40°C/+40°C	71,0
kW at -45°C/+40°C	41,5
Silnik elektryczny Specs	50/60 Hz - 90/103 kW - 1470/1770 RPM
Rozładunek	✓
Kontrolka wydajności	✓
Podstawa na stalowej ramie	✓
Okno widokowe	✓
Zawór elektromagnetyczny	✓
Panel kontrolny	✓
m ³ / h	882
Rozmiary	2680x1000x1370 mm (LxWxH)
Stock	1



Description

Used Sabroe SMC 116 S LP (Overhauled)

Overhauled Sabroe SMC 116 S LP reciprocating compressor on Freon. Complete with a Schorch KN7250M-BB014-152 electric motor - 50/60 Hz - 90/103 kW - 1470/1770 RPM and an Unisab RT-Control. The compressor has a displacement of 882 m³/h at 1460 RPM.

*Why choose for HOSBV? We're not only the largest used refrigeration specialist in Europe, but also, we deliver all equipment including an extensive test, warranty and industrial cleaning.

*Optional we can also perform a new paint job and arrange the logistics.

